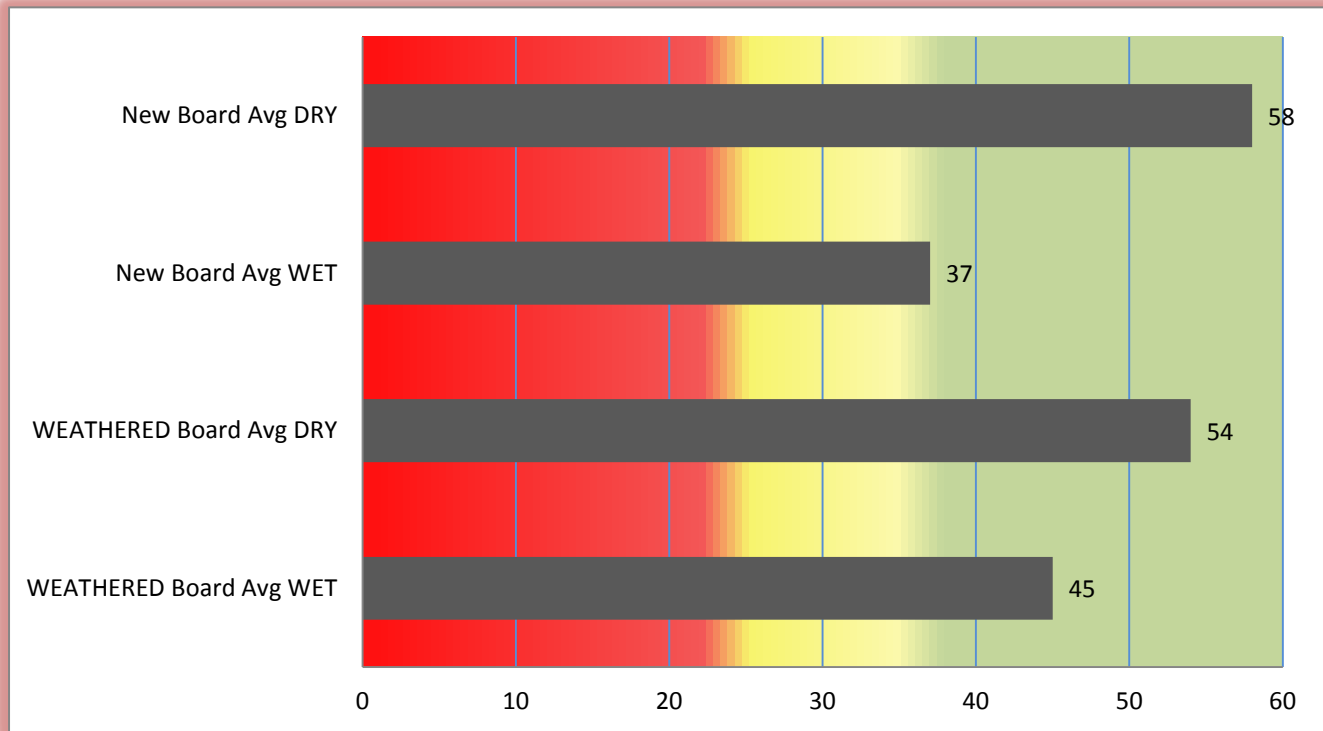




The following slip test results for Ecodek wood/plastic composite deck boards are as tested in Sep 2010 to BS7976-2: 2002. These tests have been done on clean boards. In order to maintain traction levels similar to these shown, it is imperative that the deck is designed so as to allow proper drainage and that the deck surface is kept as clean as possible.

For more information on slip testing, please go to: www.hse.gov.uk/pubns/web/slips01.pdf



Pendulum Test Value (4S Rubber)

| | PTV |
|-------------------------|---------|
| High Slip Potential | 0 - 24 |
| Moderate Slip Potential | 25 - 35 |
| Low Slip Potential | 36 - 60 |

The grooved surface offers improved slip resistance over the ribbed surface. Although both sides of the board are classified as low potential for slip. The above results were achieved by an independent testing facility and are from samples picked at random. Because of the variable nature of the natural and recycled materials used in the manufacture of Ecodek, slip resistance results may vary slightly from batch to batch.