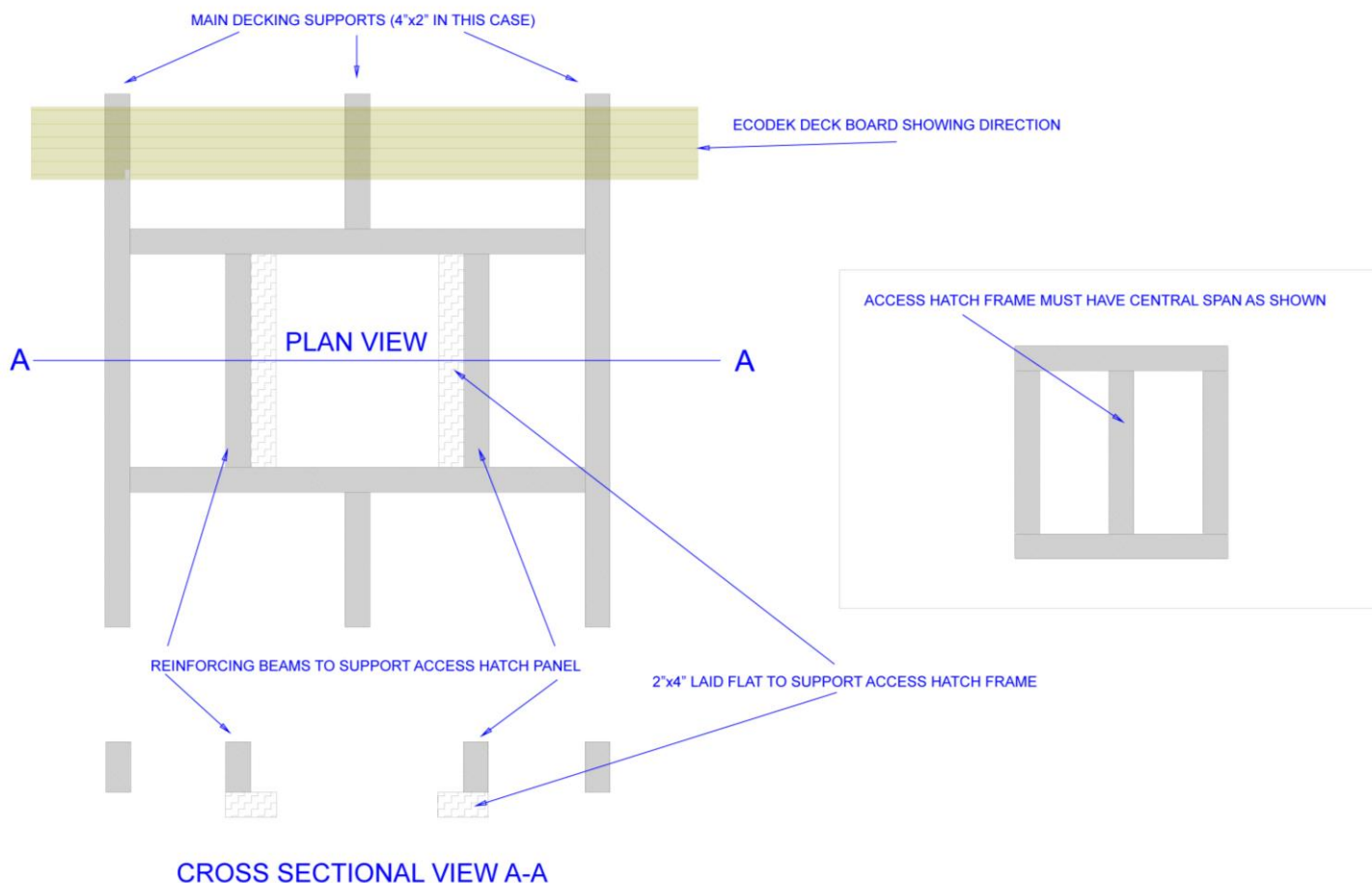


This assembly diagram is intended to be used when designing access hatch covers.

It is very important that the ecodek® is supported sufficiently as per the diagram below.



HATCH (SHOWN IN RED) ASSEMBLED INTO DECK COMPLETE WITH ECODEK DECK BOARDS



SPECIAL NOTES:

- 1) ALWAYS MAKE HATCH FRAME SLIGHTLY SMALLER THAN GAP TO ALLOW FOR EXPANSION/SWELLING OF THE TIMBERS
- 2) ACCESS HATCH SUPPORT FRAME MUST BE CROSS BRACED SO THAT ECODEK SPANS AT LEAST 3 BEARERS
- 3) USE FINGER HOLES IN THE BOARDS OR LIFT UP LATCHES TO EASE LIFTING OF PANEL
- 4) PANEL WILL BE HEAVY SO KEEP HATCH AS SMALL AS POSSIBLE (ECODEK IS APPROX 26KG/M2)